

Bringing AI EVERYWHERE

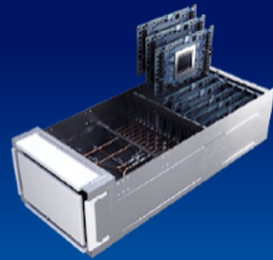


AI PC Node

AI Developer Productivity &
Light Inference

AI PC

Broadest AI SW Ecosystem



Node

Fine-tuning,
Inference

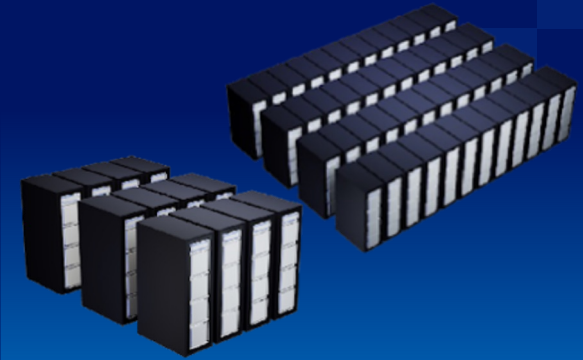


Cluster

Light Training, Tuning,
Peak Inference

ENTERPRISE AI & EDGE AI

Open Standard, "Ready to Use"



Super Cluster

Training, Tuning,
Peak Inference

Mega Cluster

Large Scale Training
& Inference

DATA CENTER AI

AI Open, Scalable Systems & Reference Arch



Intel Enterprise AI for Red Hat® OpenShift® AI and Red Hat® Enterprise Linux

Customer and Ecosystem Managed Software

Intel® Tiber™
Edge Platform

 PyTorch  OpenVINO™

Intel® Tiber™
AI Studio

 **Red Hat**
OpenShift AI

 **Red Hat**
Ansible Automation
Platform

 **Red Hat**
OpenShift
Container Platform

 **Red Hat**
Enterprise Linux



Intel® Gaudi® 3 AI Accelerator

Giant Leap in Performance
and Productivity for AI Training &
Inference

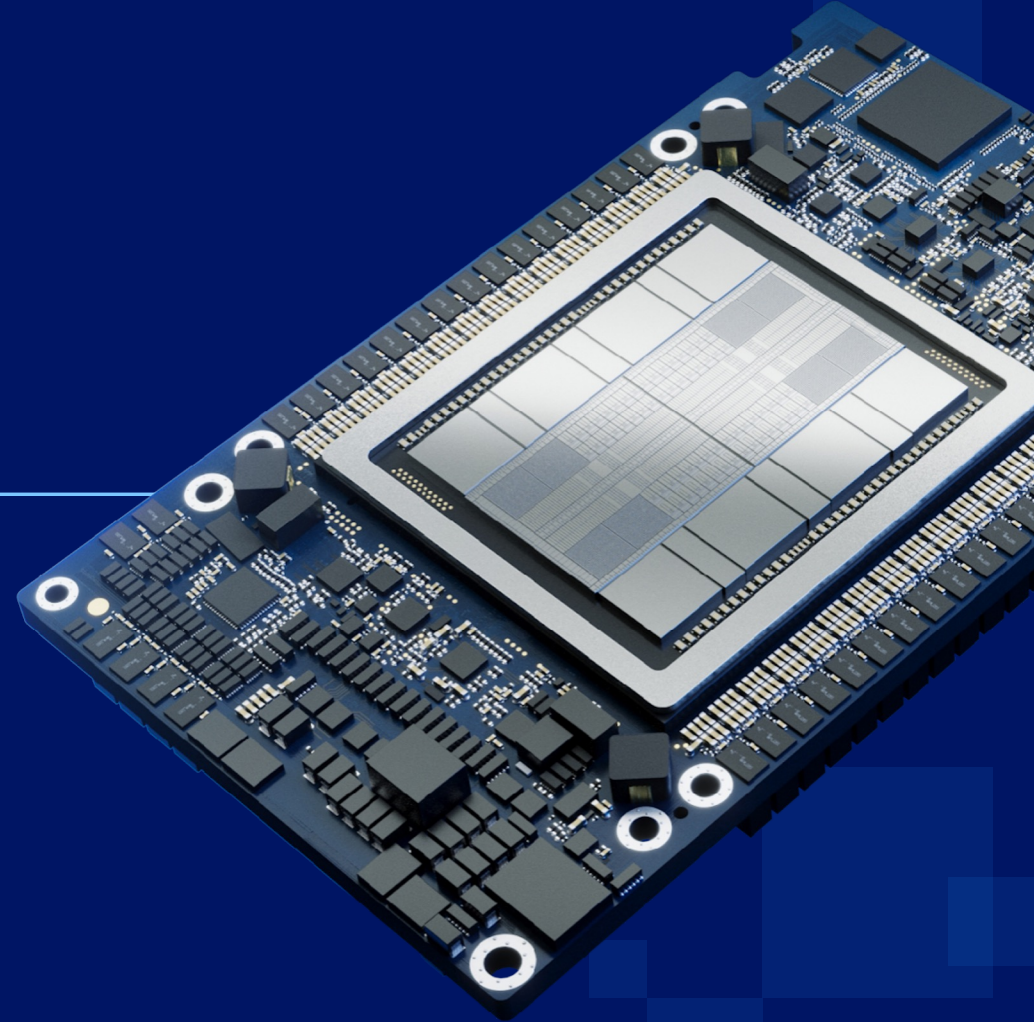


DELLTechnologies

Lenovo


**Hewlett Packard
Enterprise**

intel®



CONFIDENTIAL Computing & AI Now enabled with Red Hat*



intel®
XEON®

Intel® Trust Domain Extensions (Intel® TDX)

Extended to AI workloads and soon Gaudi3

Intel® Tiber™ Trust Services

intel®

*Guest support available from select CSPs. Host support coming soon

Come try: Preview access to Intel® Gaudi® 2 & 3*
Accelerators on Intel® Tiber™ Developer Cloud

Come visit: OPEA-based Retrieval Augmented Generation
(RAG) on Intel® Gaudi with OpenShift AI

intel®



Red Hat



Open Platform
for Enterprise AI

Come by: Our booth for a Confidential Container demo

intel®

*Intel® Gaudi® 3 Accelerators available in 2H'23